

# TOPOGRAPHIC ROUTE SURVEY FOR: FRANKLIN 85 DEVELOPMENT, LLC

## SURVEYOR'S NOTES:

- THIS SURVEY WAS PREPARED ON THE GEORGIA STATE PLANE COORDINATE SYSTEM, TRANSVERSE MERCATOR PROJECTION, EAST ZONE, NORTH AMERICAN DATUM OF 1983/2007 ADJUSTMENT. THE SCALE FACTOR FOR THIS SITE IS: 1.000041562. (GRID DISTANCE/SCALE FACTOR=GROUND DISTANCE). ALL COORDINATES SHOWN HEREON ARE GRID COORDINATES UNLESS OTHERWISE STATED.
- THIS SURVEY COMPLIES WITH BOTH THE RULES OF THE GEORGIA BOARD OF REGULATION FOR PROFESSIONAL ENGINEERS AND LAND SURVEYORS AND THE OFFICIAL CODE OF GEORGIA ANNOTATED (OCGA) 15-6-67 AS AMENDED BY HB76 (2017).
- CONVENTIONAL EQUIPMENT USED FOR MEASUREMENT WAS A TOPCON PS 103. GPS EQUIPMENT USED FOR MEASUREMENT WAS A CHAMPION TKO GNSS RECEIVER USING REALTIME KINEMATIC OBSERVATIONS PROCESSED THROUGH THE EGPS NETWORK.
- THE FIELD SURVEY WAS LAST CONDUCTED ON NOVEMBER 14TH, 2022.
- THE ELEVATIONS SHOWN HEREON ARE BASED ON THE NORTH AMERICAN VERTICAL DATUM OF 1988 (NAVD 88). CONTOURS WERE COMPUTED BASED ON FIELD LOCATED SPOT ELEVATIONS AND ARE SHOWN AT 2'-FOOT INTERVALS.

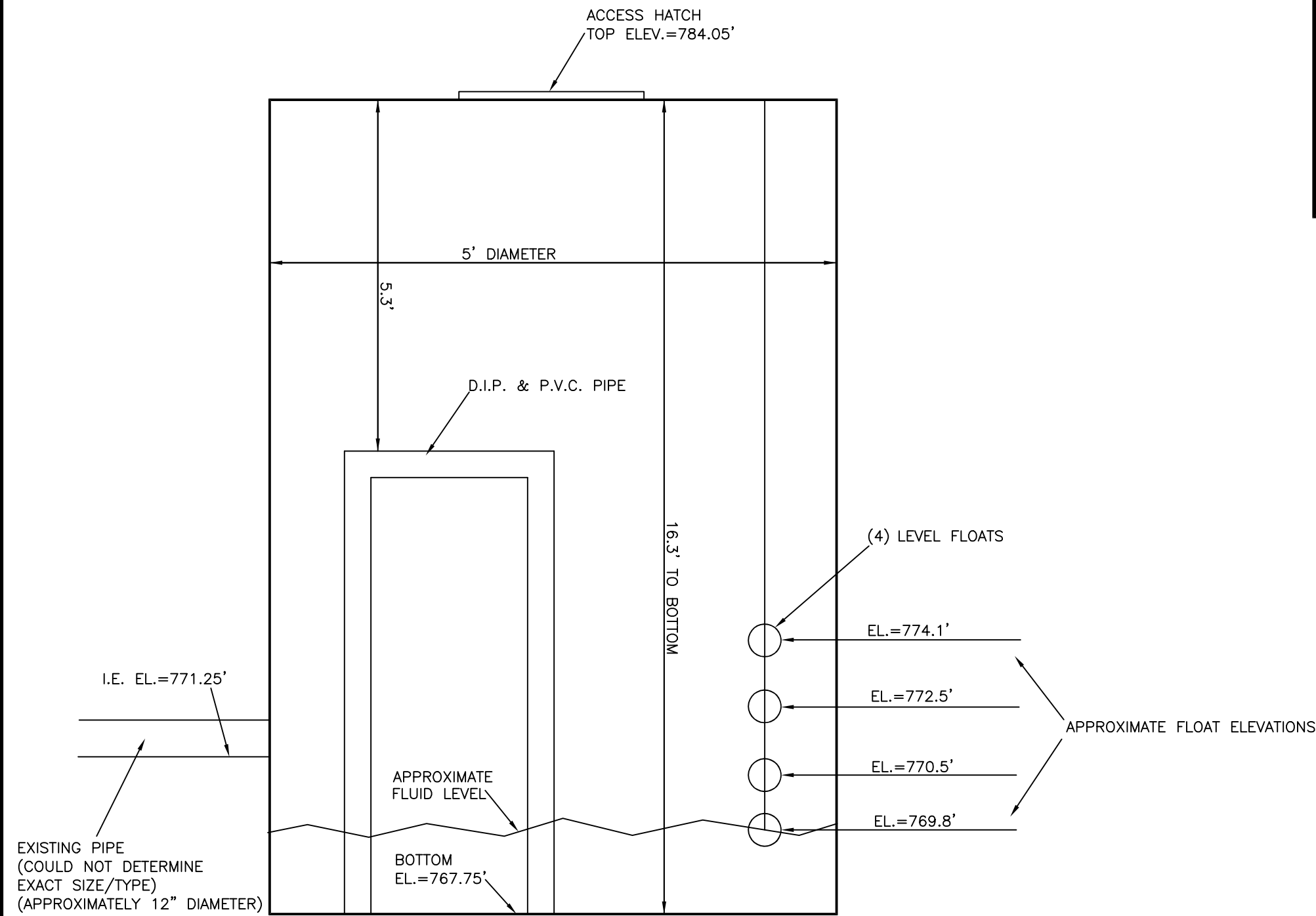


VICINITY MAP  
(NOT TO SCALE)

PROJECT LOCATION



LIFT STATION DETAIL "A" (NOT TO SCALE)



LIFT STATION PICTURES



## LEGEND:

- △ A.I.F. - ANGLE IRON FOUND
- ⊙ A.F. - AXLE FOUND
- C.M.F. - CONCRETE MONUMENT FOUND
- ▲ A.M.F. - ALUMINUM MONUMENT FOUND
- ⊙ C.T.F. - CRIMP TOP PIN FOUND
- R.B.F. - REBAR FOUND (SEE DRAWING FOR SIZE)
- ⊙ O.T.F. - OPEN TOP FOUND (SEE DRAWING FOR SIZE)
- ⊙ I.P.F. - IRON PIN FOUND
- ⊙ P.K.N.F. - PARKER KALON NAIL FOUND
- ⊙ F.X. - X-CUT FOUND
- ⊙ N.F. - NAIL FOUND
- ⊙ R.F. - ROCK FOUND
- ⊙ R.R.F. - RAILROAD SPIKE FOUND
- ⊙ T.F. - TACK FOUND
- ⊙ P.K.N.S. - PARKER KALON NAIL SET
- ⊙ R.B.S. - 1/2" REBAR SET & CAP STAMPED "LSF 1029"
- ⊙ C.M.S. - CONCRETE MONUMENT SET
- ⊙ N.S. - NAIL SET
- ⊙ C.P. - CALCULATED POINT
- ⊙ D.I. - DROP INLET
- ⊙ J.B. - JUNCTION BOX
- ⊙ W.I. - WIER INLET
- ⊙ Y.I. - YARD INLET
- ⊙ C.V. - CABLE TV VAULT
- ⊙ C.R. - CABLE RISER
- ⊙ T.R. - TELEPHONE RISER
- ⊙ T.V. - TELEPHONE VAULT
- ⊙ T.P. - TELEPHONE POLE
- ⊙ T.M.H. - TELEPHONE MANHOLE
- ⊙ U.T.B. - UNDERGROUND TELEPHONE BOX
- ⊙ A.C. - AIR CONDITIONER
- ⊙ P.B. - POWER TRANSFORMER BOX
- ⊙ E.P.B. - ELECTRIC PULL BOX
- ⊙ E.M. - ELECTRIC METER
- ⊙ P.P. - POWER POLE
- ⊙ F.L. - FLOOD LIGHT
- ⊙ S.P. - SERVICE POLE
- ⊙ L.P. - LIGHT POLE
- ⊙ C.W. - CUY WIRE
- ⊙ G.P. - GUY ANCHOR POLE
- ⊙ E.S. - ELECTRIC SERVICE
- ⊙ W.M. - WATER METER
- ⊙ W.V. - WATER VALVE
- ⊙ F.H. - FIRE HYDRANT
- ⊙ F.D.C. - FIRE DEPARTMENT CONNECTION
- ⊙ I.C.V. - IRRIGATION CONTROL VALVE
- ⊙ W.P. - WELL POINT
- ⊙ S.P.G. - WATER SPIGOT
- ⊙ B.O. - WATER BLOW OFF
- ⊙ B.F.P. - WATER BACKFLOW PREVENTER
- ⊙ SPK - SPRINKLER
- ⊙ C.O. - SANITARY CLEANOUT
- ⊙ S.S.M.H. - SANITARY SEWER MANHOLE
- ⊙ G.V. - SANITARY GATE VALVE
- ⊙ G.T. - GREASE TRAP
- ⊙ U.M. - UNKNOWN TYPE MANHOLE
- ⊙ G.A.S. - GAS VALVE
- ⊙ G.M. - GAS METER
- ⊙ P.R. - PROPANE TANK
- ⊙ F.P. - FLAG POLE
- ⊙ T.S.P. - TRAFFIC SIGNAL POLE
- ⊙ T.S.B. - TRAFFIC SIGNAL BOX
- ⊙ M.W. - MONITORING WELL
- ⊙ S.H. - SPRING HEAD
- ⊙ B.P. - BOLLARD POST
- ⊙ S.N.L. - TRAFFIC SIGN
- ⊙ H.C.P. - HANDICAP PARKING
- ⊙ B.M. - BENCHMARK
- ⊙ M.B. - MAILBOX
- ⊙ H.C.R. - HANDICAP RAMP
- ⊙ A.H. - ACCESS HATCH
- ⊙ R.L. - ROOF LINE
- ⊙ E.P. - EDGE OF PAVEMENT
- ⊙ B.O.C. - BACK OF CURB
- ⊙ S.W.C.B. - SINGLE WING CATCH BASIN
- ⊙ D.W.C.B. - DOUBLE WING CATCH BASIN
- ⊙ I.E. - INVERT ELEVATION
- ⊙ EL. - ELEVATION
- ⊙ C.M.P. - CORRUGATED METAL PIPE
- ⊙ R.C.P. - REINFORCED CONCRETE PIPE
- ⊙ B.C.C.M.P. - BITUMINOUS COATED CORRUGATED PIPE
- ⊙ H.D.P.E. - HIGH DENSITY POLYETHYLENE PIPE
- ⊙ P.V.C. - POLYVINYL CHLORIDE PIPE
- ⊙ D.I.P. - DUCTILE IRON PIPE
- ⊙ R.W. - RETAINING WALL
- ⊙ T - BURIED TELEPHONE LINE
- ⊙ V - OVERHEAD TELEPHONE LINE
- ⊙ W - BURIED WATER MAIN
- ⊙ SS - BURIED SEWER LINE
- ⊙ G - BURIED GAS LINE
- ⊙ E - BURIED ELECTRIC LINE
- ⊙ TV - BURIED CABLE TV
- ⊙ O - CHAIN LINK FENCE
- ⊙ D - WOOD FENCE
- ⊙ W - WIRE FENCE
- ⊙ O - WROUGHT IRON FENCE
- ⊙ OHP - OVERHEAD POWER LINES
- ⊙ U - UNKNOWN TYPE BURIED UTILITY
- ⊙ UU - TRAFFIC SIGNAL LINE
- ⊙ > - FENCE GATE
- P/L - PROPERTY LINE
- R/W - RIGHT-OF-WAY
- N/F - NOW OR FORMERLY
- ⊙ - CENTERLINE
- INTX - INTERSECTION
- R - CURVE RADIUS
- L - CURVE ARC LENGTH
- Δ - CURVE CENTRAL ANGLE
- Δ - CHORD BEARING
- C. DIST - CHORD DISTANCE
- L.L. - LAND LOT
- N - NORTHING COORDINATE
- E - EASTING COORDINATE
- S/B - SETBACK
- P.O.B. - POINT OF BEGINNING
- P.O.C. - POINT OF COMMENCEMENT
- G.D.O.T. - GEORGIA DEPARTMENT OF TRANSPORTATION
- STA. - STATION
- SQ. FT. - SQUARE FEET
- - CONTINUOUS OWNERSHIP
- ⊕ - BUILDING HEIGHT LOCATION
- [25.5] - BUILDING HEIGHT (FROM GROUND TO ROOF PEAK)
- x 25.52 - SPOT ELEVATION

REGISTERED PROFESSIONAL  
LAND SURVEYORS

P.O. BOX 256  
GAINESVILLE, GA 30503  
PHONE: (770) 532-6492  
www.pattonsurveying.com

**PATTON**  
LAND SURVEYING, LLC

LAND SURVEYING FIRM  
CERTIFICATE OF AUTHORIZATION  
NUMBER LSF 001029

COMPUTATIONS BY: J.M.J.

SURVEYED BY: S.W., D.W. & D.C.

DRAFTED BY: J.M.J.

CHECKED BY: C.M.P.

TOPOGRAPHIC ROUTE SURVEY FOR:

**FRANKLIN 85 DEVELOPMENT, LLC**

- LOCATED IN -

G.M.D. 269  
FRANKLIN COUNTY, GEORGIA

REVISIONS

NO.	DATE	DESCRIPTION

SHEET NUMBER:

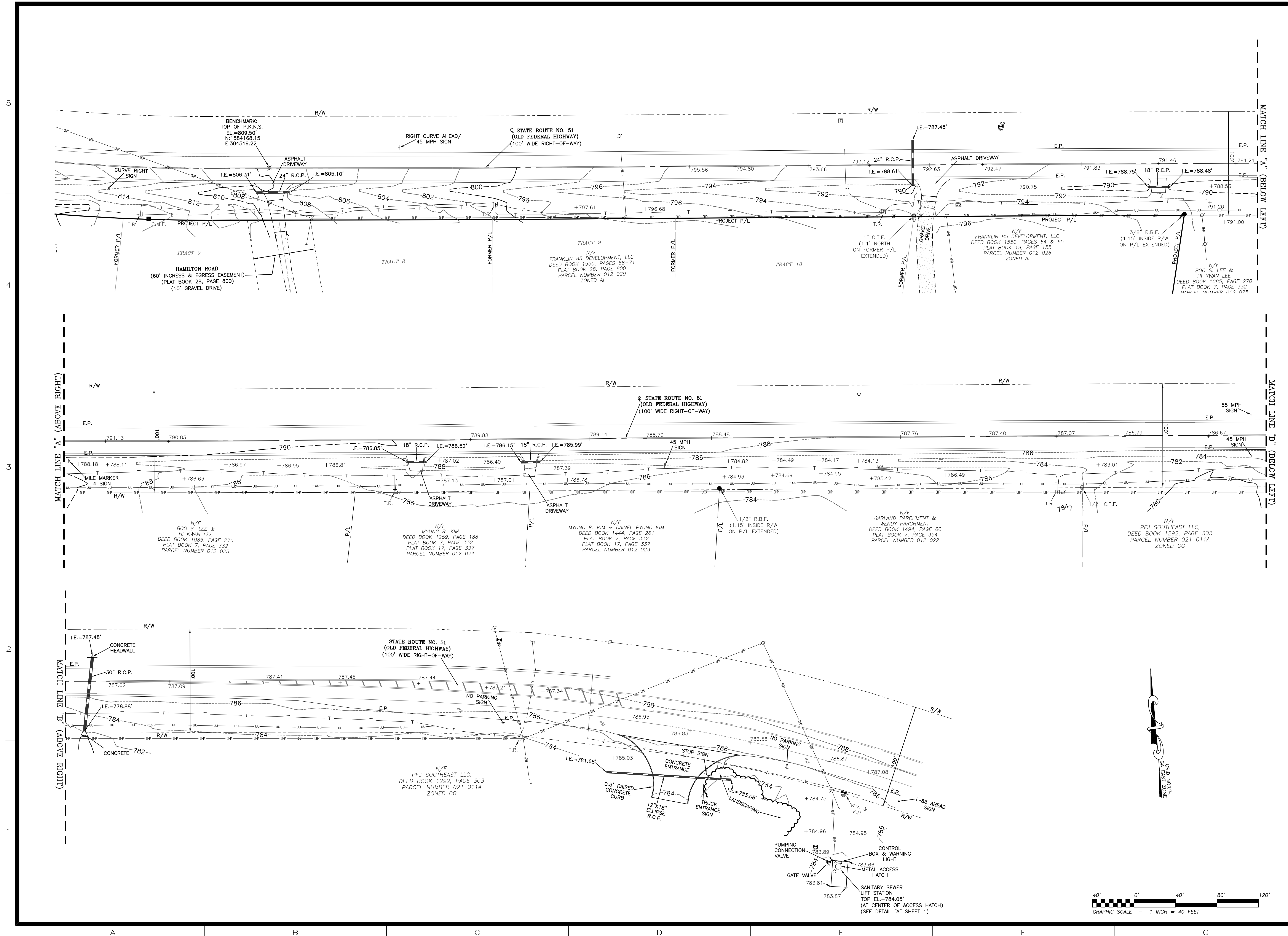
1 of 2

SCALE: N/A

SURVEY DATE: 11/14/2022

PLAT DATE: 11/15/2022

22-060.03-SEWER-ROUTE.dwg  
JN. 22-060



REGISTERED PROFESSIONAL  
LAND SURVEYORS

**PATTON**  
LAND SURVEYING, LLC

P.O. BOX 256  
GAINESVILLE, GA 30503  
PHONE: (770) 532-6492  
www.pattonsurveying.com  
LAND SURVEYING FIRM  
CERTIFICATE OF AUTHORIZATION  
NUMBER LSF 001029

COMPUTATIONS BY: J.M.J.  
SURVEYED BY: S.W., D.W. & D.C.  
DRAFTED BY: J.M.J.  
CHECKED BY: C.M.P.

TOPOGRAPHIC ROUTE SURVEY FOR:  
**FRANKLIN 85 DEVELOPMENT, LLC**

— LOCATED IN —  
G.M.D. 269  
FRANKLIN COUNTY, GEORGIA

REVISIONS

No.	DATE	DESCRIPTION

SHEET NUMBER:  
**2 of 2**

SCALE: 1" = 40'  
SURVEY DATE: 11/14/2022  
PLAT DATE: 11/15/2022  
22-060.03-SEWER-ROUTE.dwg  
JN. 22-060